

Floor Plan:
Asheville-NC

4 Beds | 2.5 Baths | 2,643 sqft | Garage: Yes



Asheville

This large, 2-story home is designed to be airy and open, with plenty of space for when and where you need it. The large great room connects with the kitchen and breakfast area through an extended bar, perfect for gathering family and friends.

- Ample space with 2,600 sq. ft.
- Large great room
- Dramatic foyer
- Master suite downstairs

Floor Plan:
Asheville-NC

4 Beds | 2.5 Baths | 2,643 sqft | Garage: Yes

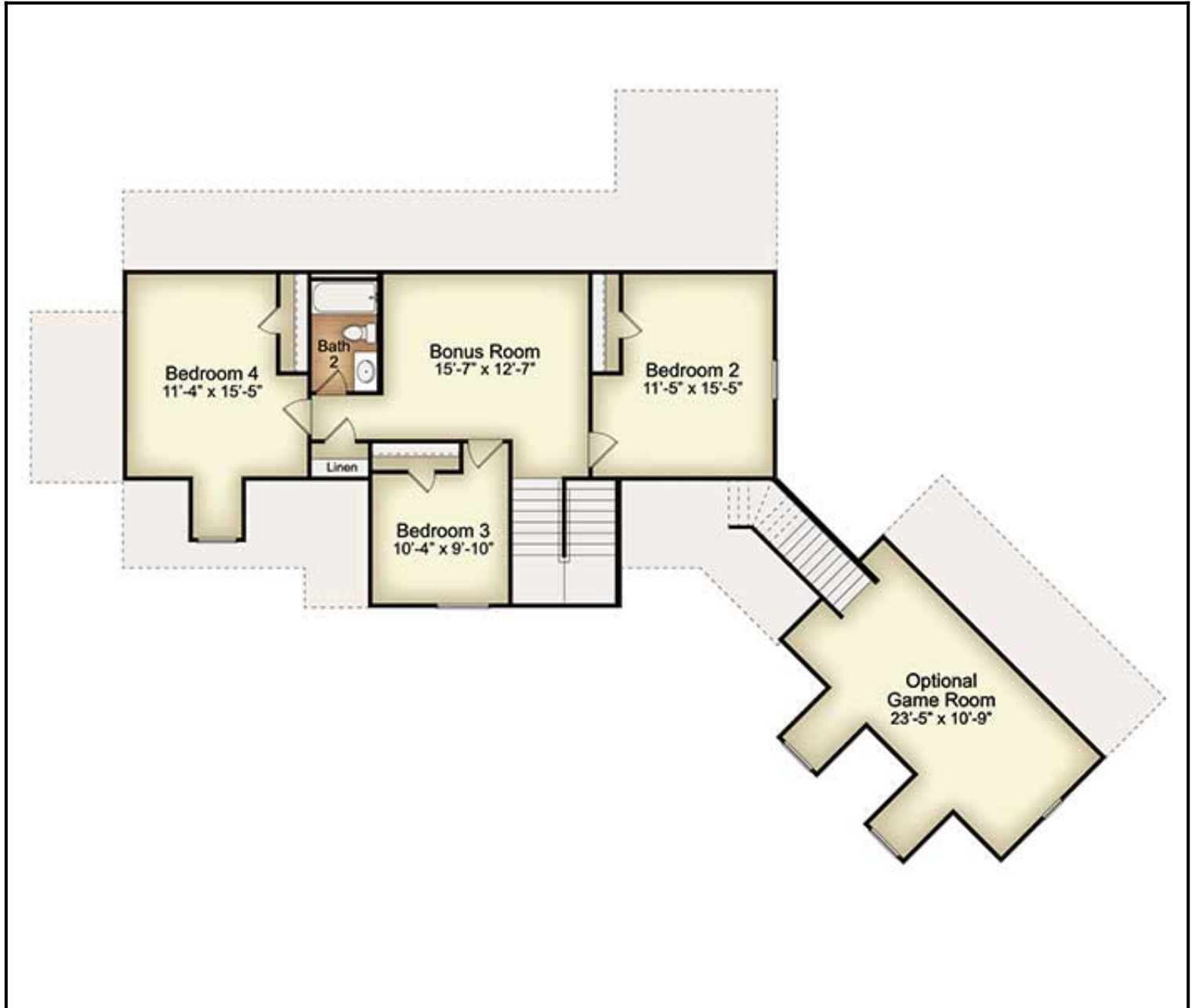


First Floor

First Floor

Floor Plan:
Asheville-NC

4 Beds | 2.5 Baths | 2,643 sqft | Garage: Yes



Second Floor

Optional Game Room